

## 60/40 Amp Automotive Plug-In / PCB Power Relay

## PC792H



### FEATURES

- Most popular automotive relay
- 1 A and 1 C contact forms available
- Contact switching capacity up to 120 Amps
- 60 Amps continuous carrying capacity
- Up to 125 degrees C operating temperature
- Five different case styles available
- Sockets available from Picker Components
- **Now available Lead Free & RoHS Compliant**

### CONTACT RATINGS

Contact Form	1 Form A or 1 Form C	
	Normally Open	Normally Closed
Max Switching Current	Make 120 Amps	Make 45 Amps
	Break 60 Amps	Break 40 Amps
Max. Switching Voltage	Current Dependent; see curve page 2	
Max. Continuous Current	60 Amps	40 Amps
Minimum Load	0.5 A @ 12 VDC	

### CONTACT DATA

Material	AgSnOInO (Silver Tin Indium Oxide)	
Initial Contact Resistance	100 milliohms max @ 0.1A, 6VDC	
Service Life	Mechanical	1 X 10 <sup>7</sup> Operations
	Electrical	2 X 10 <sup>5</sup> Operations

### CHARACTERISTICS

Operate Time	7 ms. typical
Release Time	2 ms. typical
Insulation Resistance	100 megohms min, at 500VDC, 50%RH
Dielectric Strength	500 Vrms, 1 min. between coil and contacts
Shock Resistance	20 g, 11ms, functional; 200 g, destructive
Vibration Resistance	DA 1.27 mm, 10 - 40 Hz; 40-70 Hz: 5 g; DA 0.5mm, 70-100 Hz; 100-500 Hz: 10 g.
Drop Resistance	1 Meter height drop on concrete in final enclosure
Power Consumption	1.8 W approx.
Ambient Temperature Range	-40 to 125 degrees C operating
Weight	35 grams approx.

### ORDERING INFORMATION

Example:	PC792H	-1C	-C1	-12	C	-RN	-X
Model							
Contact Form	1A, 1C or 1U (1 form A with 2 #87 Terminals)						
Case Style	C: Plug-In; P: PCB; C1: Plastic Bracket						
Coil Voltage							
Enclosure	C: Dust Cover, S: Sealed Case						
Parallel Component	Nil: None; D: Diode; R: Resistor; N: Nickle Plated Terminals						
RoHS Compliant:	Nil: Not RohS, -X: RoHS Compliant						

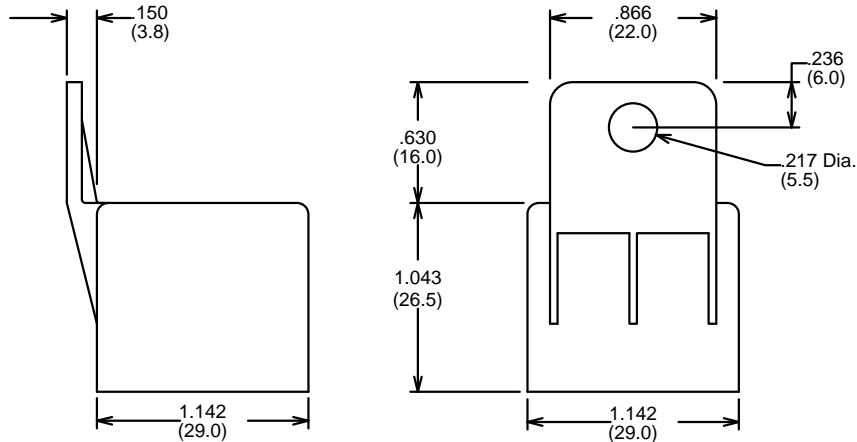
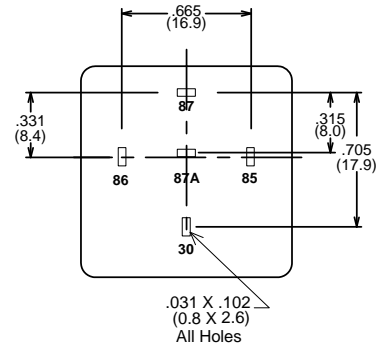
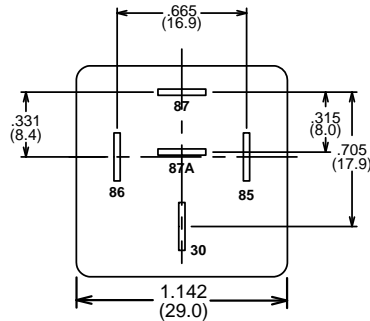
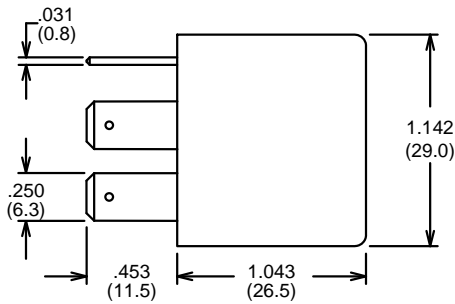
**COIL DATA**

Coil Voltage	Resistance ohms $\pm$ 10%	Must Operate Voltage Max. (VDC)	Must Release Voltage Min. (VDC)	Continuous Voltage Max. (85 Degrees C) (VDC)
6	20	3.9	0.6	7.8
12	80	7.8	1.2	15.6
24	320	15.6	2.4	31.2

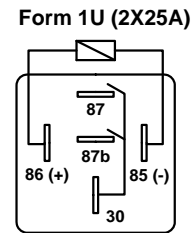
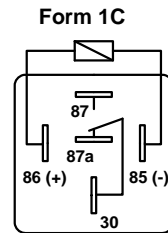
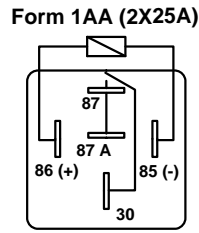
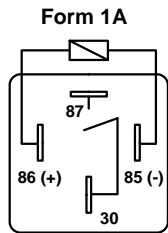
**Plug-In Type  
Plug-In Case (C) and PCB Case (P)**

**Dimensions in Inches (millimeters)**

**Bottom View  
PC Board Layout**



**Molded Plastic Bracket (C1)**



**Wiring Diagrams**

Notes:  
 Tolerances  $\pm$  .010 unless otherwise noted  
 Maximum make current refers to inrush of a lamp load  
 In 85 degree C ambient reduce maximum coil voltage to 72%



3220 Commander Drive, Suite 102, Carrollton, Texas 75006

Sales: Call Toll Free (888) 997-3933 Fax (818) 342-5296 email: pickerwest@sbcglobal.net URL: pickercomponents.com