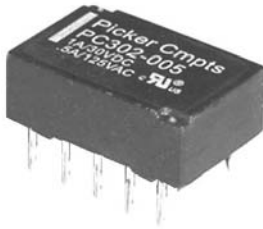


## Microminiature Signal Relay

## PC302



### FEATURES

- Microminiature design
- DIL Package for PC board or socket
- Low 5mm profile
- Meets FCC part 68 voltage surge
- Bifurcated contacts for high sensitivity
- Single and dual coil latching available
- Sealed, immersion cleanable



File # E86876

### UL/CSA RATINGS

Contact Form	2 Form C DPDT (bifurcated contacts)
Rated Load	0.5 A at 125 VAC, 1A at 30 VDC
Max. Operating Voltage	250 VAC, 220 VDC
Max. Continuous Current	1 Amp
Minimum Permissible Load	10 micro A, 10 mVDC

### CONTACT DATA

Material	AgPd + Au (Silver Palladium + Gold Plate)	
Initial Contact Resistance	50 mOhm max @ 1mA, 20mV, 1KHz, meets DIN 4160 part 4	
Service Life	Mechanical	2 X 10 <sup>5</sup> Operations
	Electrical	1 X 10 <sup>8</sup> Operations

### COIL DATA

Type	Coil Voltage	Resistance ohms $\pm 10\%$	Must Operate Voltage Max. (VDC)	Release Voltage Or Reset Voltage	Maximum Voltage	Coil Power Consumption mW
Single Side Stable .140 W	3	64.3	2.25	0.3	6.0	140
	5	178	3.75	0.5	10	140
	6	257	4.50	0.6	12	140
	9	579	6.75	0.9	19	140
	12	1028	9.00	1.2	48	140
Single Coil Latching .100 W	24	2880	18.0	2.4	40.8	200
	3	90	2.25	-2.25	5.7	100
	5	250	3.75	-3.75	9.5	100
	6	360	4.50	-4.5	11.4	100
	9	810	6.75	-6.75	17.1	100
Dual Coil Latching .200 W	12	1440	9.00	-9.00	22.8	100
	24	3840	18.0	-18.0	45.6	150
	3	45	2.25	2.25	4.5	200
	5	125	3.75	3.75	7.5	200
	6	180	4.50	4.50	9.0	200
Dual Coil Latching .200 W	9	405	6.75	6.75	13.5	200
	12	720	9.00	9.00	18.0	200
	24	1290	18.0	18.0	36.0	300

Note: Custom coil voltages within the ranges shown are available on special order.

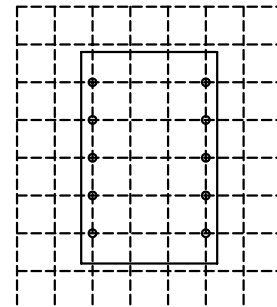
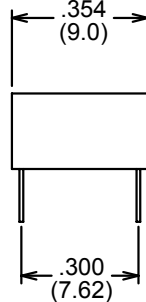
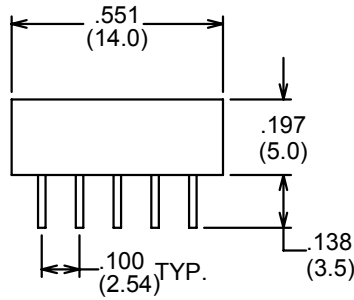
### ORDERING INFORMATION

Example:	PC302	-12	-L1
Model			
Coil Voltage			
Type of Operation			
Nil: Single Side Stable			
L1: Single Coil Latching			
L2: Dual Coil Latching			

**CHARACTERISTICS**

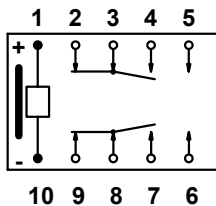
Type	Single Side stable	Latching, L1 & L2
Operate Time	2 ms at nominal coil voltage	N/A
Set Time	N/A	2 ms at nominal coil voltage
Release Time	1 ms average	N/A
Reset Time	N/A	2 ms at nominal coil voltage.
Insulation Resistance	1000 Mmegohms min. at 500 VDC, 50% RH	
Dielectric Strength	1000 V rms, 1 min. between coil and contacts and between adjacent parts 500 V rms, 1 min. between open contacts	
Surge Strength	1500 V, between coil and contacts (FCC Part 68)	
Capacitance	0.4 pf max. between contacts; 0.2 pf max. between adjacent poles; 0.9 pf max. between coil and contacts	
Shock Resistance	50 g, 11 ms.	
Vibration Resistance	10 - 55 Hz; 3mm DA	
Allowable Max. Power Consumption at 20 C	0.4 W	
Ambient Temperature	-40 degrees C to 70 degrees C	-40degrees C to 70 degrees C
Power Consumption	0.14 to 0.2 W	0.1 to 0.3 W
Weight	5 grams approx.	

**Dimensions in Inches (millimeters)  
Drawings are 2X actual size**

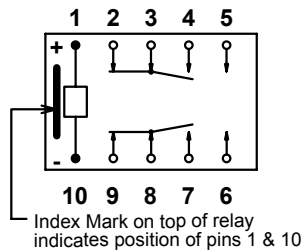


0.1 (2.54) Grid Pattern  
10 Holes .032 (0.81)

Single Side Stable

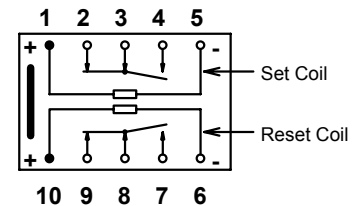


Single Coil Latching



Index Mark on top of relay indicates position of pins 1 & 10

Dual Coil Latching



Pin Functions Bottom Views Shown

Notes:

Tolerances  $\pm$  .010 unless otherwise noted  
On single coil latching set polarity shown



3220 Commander Drive, Suite 102, Carrollton, Texas 75006

Sales: Call Toll Free (888) 997-3933 Fax (818) 342-5296 email: pickerwest@sbcglobal.net URL: pickercomponents.com